



eco  
surfaces

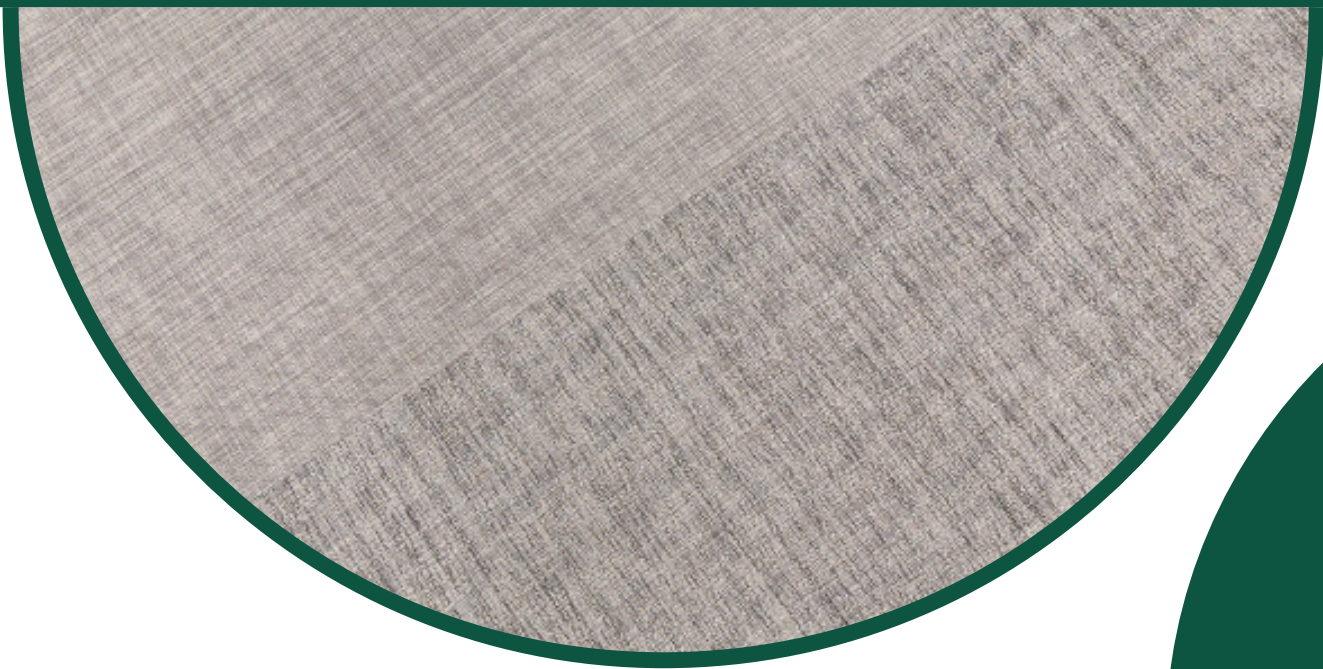


**ECOsurfaces is a sustainable flooring company dedicated to improving lives—for people today and for generations to come.**

For over 25 years, we’ve designed surfaces that help people thrive.

We’re focused on the interaction between people and surfaces: how to optimize performance, maximize comfort, and protect the Earth—our ultimate base layer—for generations to come. We use innovative technology to engineer industry-leading performance attributes related to acoustics, ergonomics, and safety. Using valuable materials harvested from the global waste stream, we create products that achieve the optimal balance of force reduction and energy restitution—each expertly customized to the goals of its unique application.

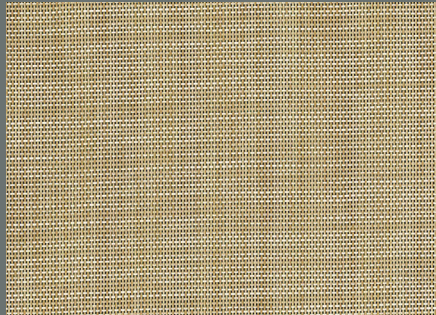
Desert & River



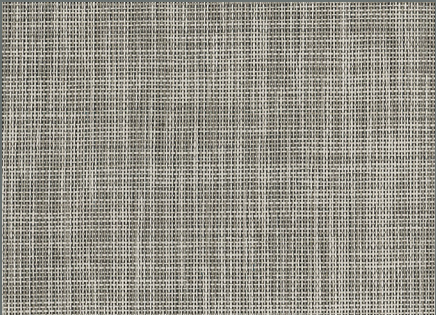
Desert & River



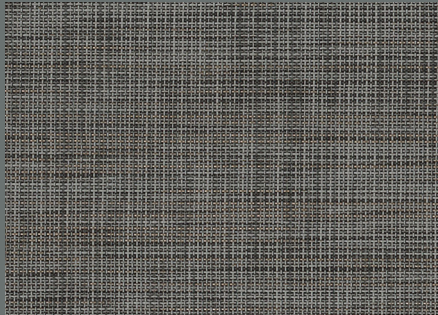
Desert Colors



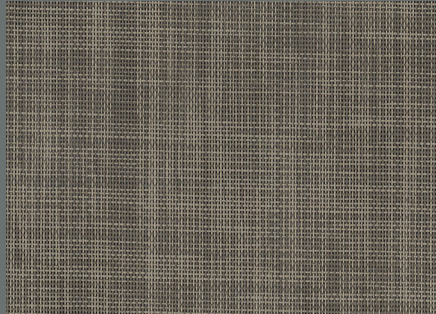
SAHARA 3025



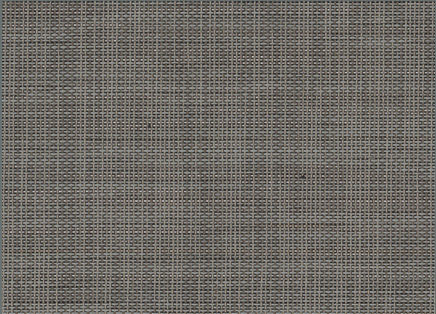
MOJAVE 3022



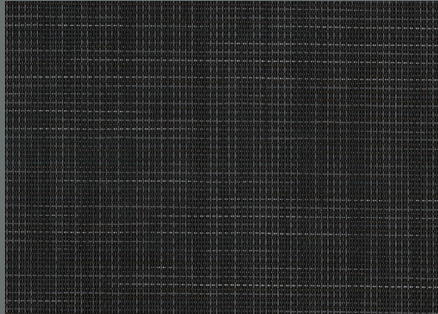
GOBI 3021



KALAHARI 3023

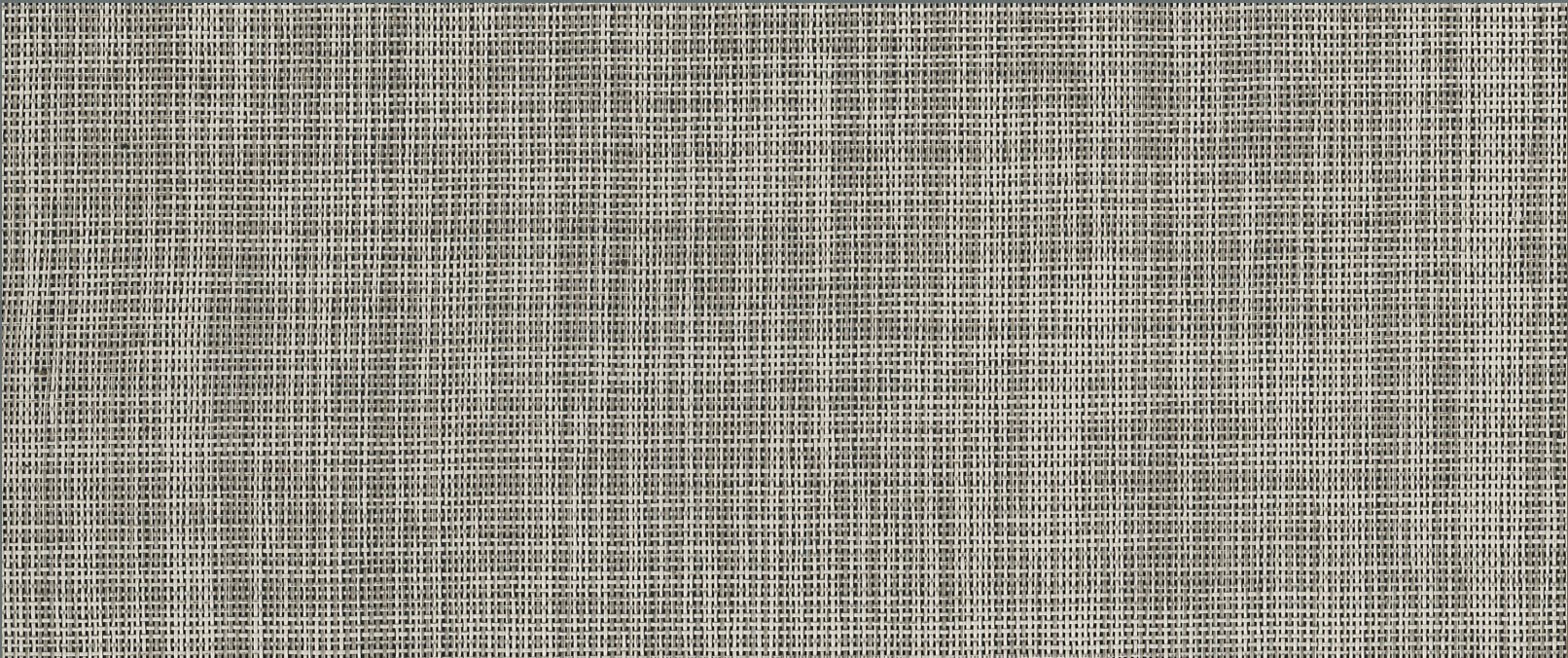


GREAT BASIN 3024



PATAGONIAN 3020

eco surfaces




MOJAVE 3022

Desert & River feature a 1mm woven vinyl surface layer fusion bonded to a 3mm vulcanized composition rubber base layer. The resulting surface provides safety, ergonomic, and acoustic benefits and a visual with both pattern and texture.

 4mm (1mm + 3mm) x 72" (1.83m) wide

BUILT ON  
**itsTRU**  
TECHNOLOGY

 **6.82%\*** **Force Reduction**  
Absorption of impact energy

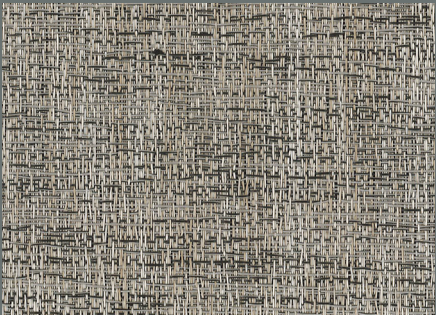
 **71.82%\*** **Energy Restitution**  
Useful return of impact energy

\* Typical Deltec Field Tester Results

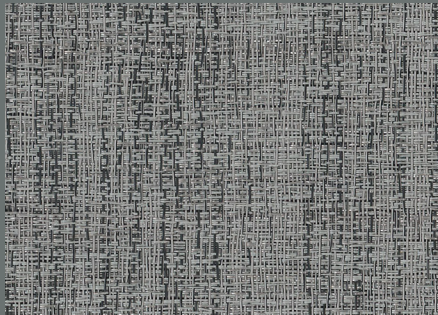
River Colors



RIO GRANDE 3005



HUDSON 3002



AMAZON 3001



NILE 3003

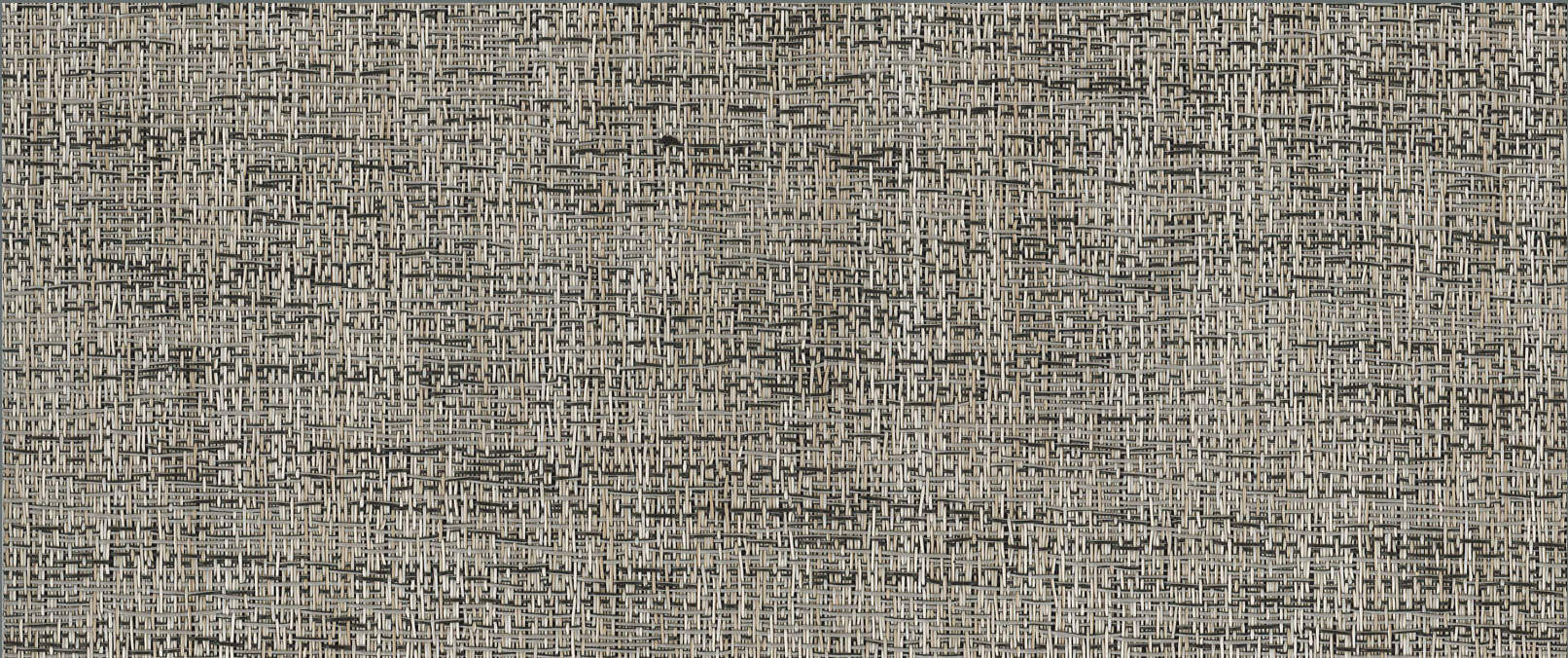


MISSISSIPPI 3004



DANUBE 3000

Desert & River



HUDSON 3002

Actual samples and final product may vary from color swatches shown. For additional information, please visit [ecosurfaces.com](https://ecosurfaces.com).