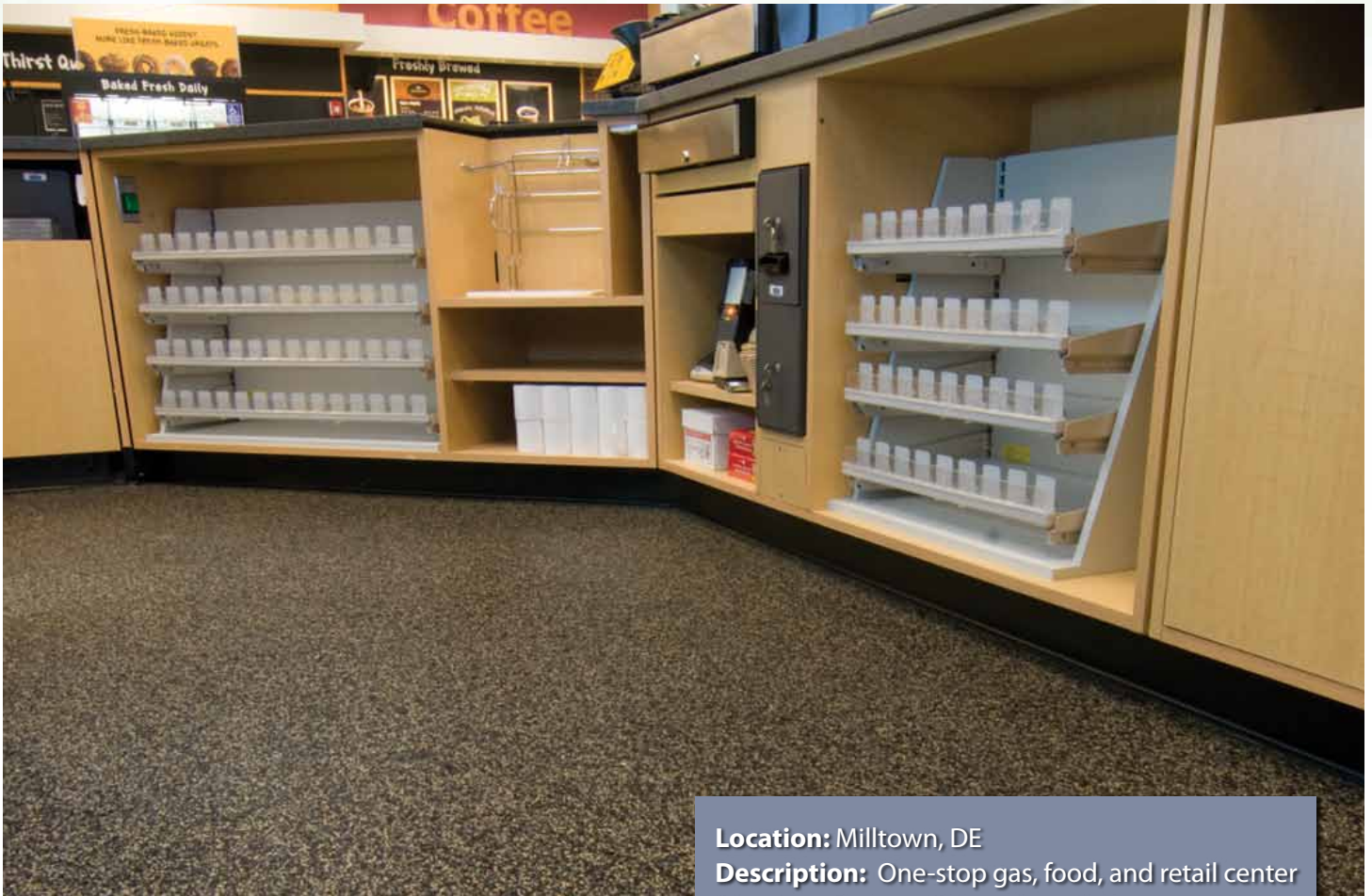


Wawa Convenience Center



Location: Milltown, DE

Description: One-stop gas, food, and retail center

Flooring Choice: ECOsurfaces' ECOrx system

ECOsurfaces Rep Firm: CAS & Associates

Wawa Convenience Center, Milltown, DE

Convenience Center Design and Product Needs:

- Contemporary visual appeal to correspond with the design and branding of the Wawa chain
- Resilient under-foot support for employees spending long hours on their feet
- Easy installation for a speedy grand opening
- Environmentally supportive characteristics to assist in the establishment of a "green" corporate chain

ECOrx's Delivering Characteristics:

- Laminated wear-layer options available in any standard ECOsurfaces color pattern
- Cushioned recycled rubber underlayment support
- Heterogeneous composition for complete installation in as little as 12 hours
- Heightened recycled content for increased LEED contribution potential

Finding a durable, cushioned, easily installed, and aesthetic flooring solution for a 24-hour convenience center is no easy task. Ask the architects charged with designing Wawa stores and gas stations along the East Coast. Typically open for 24-hours a day, time saved is profit earned when it comes to constructing a Wawa convenience center.

ECORx, with its factory laminated underlayment and wear layer all in one heterogeneous product, has revolutionized the flooring installation process with speed and efficiency. Fused at the manufacturing facility in the United States, ECORx enables the installation of underlayment and surfacing to be completed in one process - without the need for curing time between layers. For the Milltown Wawa, this meant a speedy installation and opening with the gain of a flooring solution that retains long-term environmental and physical benefits for both employees and customers.

Wawa makes a priority of delivering superior customer satisfaction, with core values that include delighting customers, valuing people, and

embracing change. Ensuring that employees represent these business values when they are disgruntled from fatigue can be a difficult endeavor. However, with the tested ergonomic support of ECORx, employees at the Milltown Wawa in Delaware experience minimized under-foot fatigue and decreased environmental hindrances to their daily work responsibilities. ECORx's recycled composition and extensive variety of color patterns even ensured that Wawa could deliver these benefits while upholding the design standards of the business chain and contributing to environmental conservation and green building initiatives.

With a passion for winning and a drive for change, the Wawa in Milltown was among the first facilities to embrace the benefits of ECORx surfacing. Installed in the Zuma color pattern fused with 12mm recycled rubber underlayment, Wawa is contributing toward the satisfaction of their employees, customers, and community. They've designed a convenience center that provides cushioned foot support, inviting commercial design, and proactive environmental conservation.

